

# the *Tuscany*



An arch is one of the strongest supports in nature. At the very center sits the keystone, a piece integral to the strength and integrity of the arch. The English cottage exterior, arched windows, long sloping roof, and natural material siding, speak of coziness and warmth. Yet the interior has space for all the normal activities a family demands, including a space for the children or guests.

Double front doors welcome you. A study on your right and the great room on your left meet the moods and needs of all the occupants – enter the hub of family life in the kitchen and great room or take a few quiet moments in the study. The second bedroom takes up the second floor with a bathroom, and a loft that can be used as an extra play area if needed. Away from the noise of children, the master bedroom and guest room are located off the dining area, with a large bathroom and an extra entrance to the study. To complete the picture, a well-located mudroom and half bath occupy the space between the kitchen and two-car garage. The garage has a gently sloping roofline and adds balance to the overall structure.

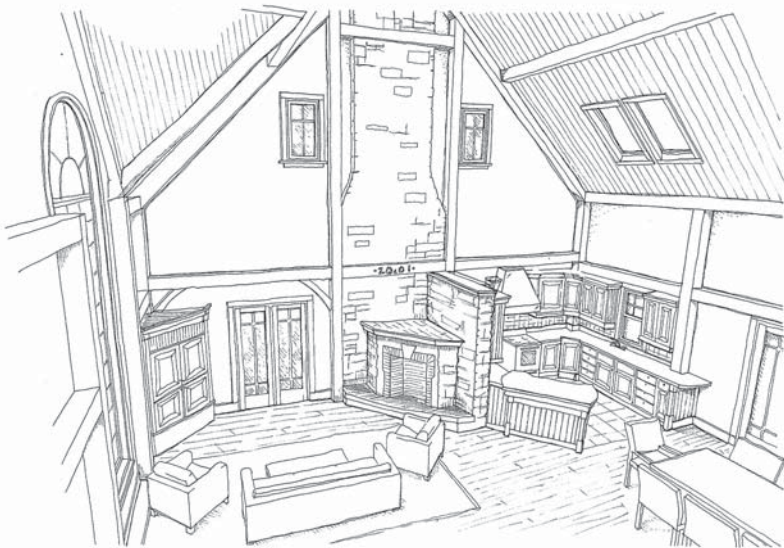


## *the Tuscany*

Total Square Footage: 2,120 sq. ft.

Main Floor: 1,580 sq. ft.

Second Floor: 540 sq. ft.

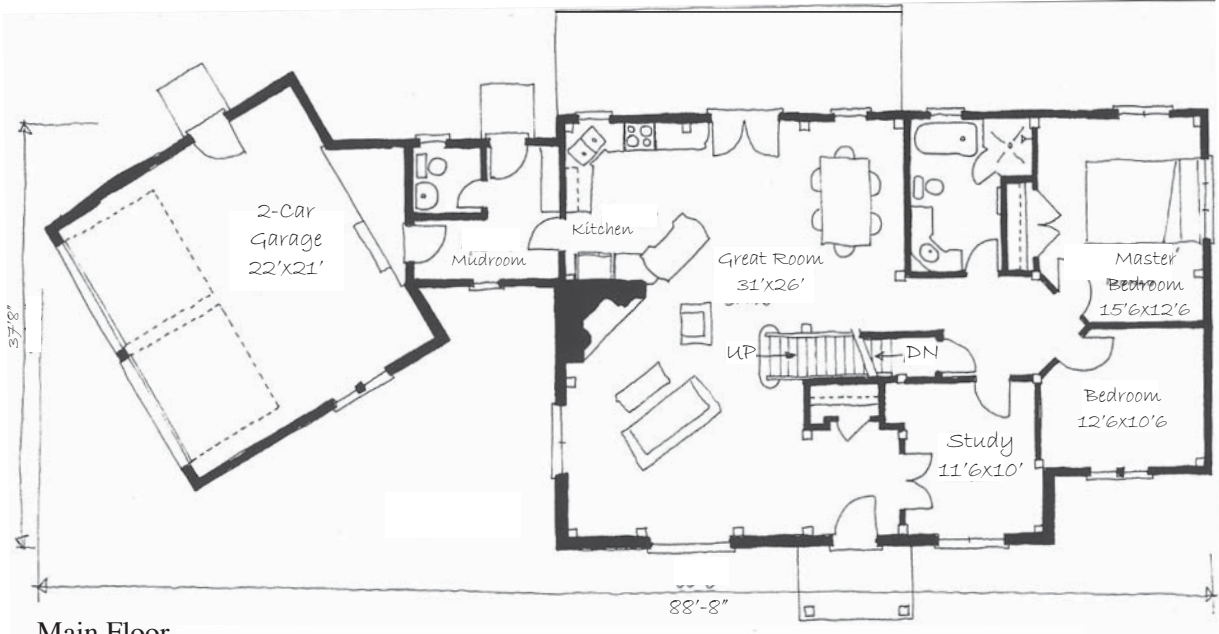


*the Tuscany*

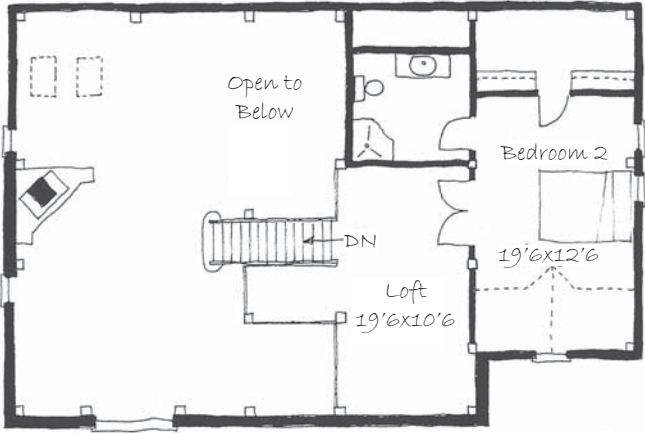
Total Square Footage: 2,120 sq. ft.  
 Main Floor: 1,580 sq. ft.  
 Second Floor: 540 sq. ft.



**PineRidge**  
*timmerframe*



Main Floor



Second Floor